

PRECISION FEEDING



Precision – Capacity – Control



ONE2FEED

www.one2feed.dk



Hans Scriver
Managing Director

Precision

- ✓ Individual groups & recipes
- ✓ Frequent distribution (24/7)
- ✓ Consistent and uniform mixing

One2Feed full automatic feeding systems assures high feeding efficiency and the opportunity to manage the feeding process and the use of an unlimited number of ingredients and recipes. Working 24 hours.



One2Feed is a Danish designed and manufactured fully automated feeding system. The construction is based on durable proven technologies and components, requiring an absolute minimum of service and maintenance.

In 2008, the One2Feed automatic feeding system was introduced to the market. Since then the system has proven its value to dairy farmers at a global level, saving labor and optimizing profitability.

Our ambition was to offer a system contributing to the earnings of the farmer and at the same time offering the versatility to plan the daily work independently of the feeding routines. We believe we have succeeded, moreover we are proud that our customers share this opinion.




*One2Feed roughage hopper, mobile or stationary.
Capacity from 5 up to 42 m³.*



ONE2FEED

Capacity

- ✓ One2Feed roughage hopper with large capacities
- ✓ Can handle both short and long cut roughage
- ✓ Optional as stationary or mobile units



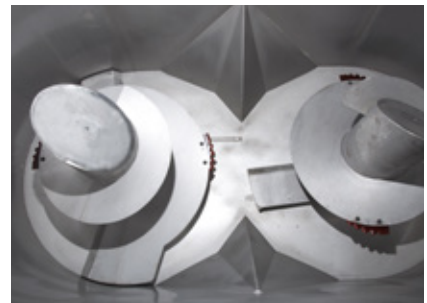
One2Feed Roughage Hopper with horizontal storage and a moving floor conveying to prevent oxidation, ensuring that the oldest fodder is used first. Wastage is minimized and cleaning unnecessary.



Patented floor in synthetic fiber composites



Heavy-duty 400 V power rail, offering continued operation around the clock.



Vertical mixer with 2 augers in stainless steel

One2Feed Mixer is made from the best and most durable materials, ensuring minimal maintenance and superior cleaning and hygiene.

The mixer has a capacity of 3.5 m³. It is made of stainless steel and is available either with side doors or with frequency-controlled unloading belt.

The mixer has an integrated weighing system. All ingredients are loaded with high precision. During the distribution the scale ensure even distribution.

Speed, mixing and the unloading belt have variable speed control, offering optimal mixing and ensuring uniform distribution..

Control

- ✓ Full historical documentation for all feeding
- ✓ Instant overview and superior management
- ✓ Service and support via the Internet



The Feed pusher ensures height feed efficiency and a minimum of waste.

Precise and uniform discharge

The heart of One2Feed solution is the unique management software providing a quick overview of the feedings. This ensure that any feeding has been carried out as required and at the desired time. The system is connected to the Internet and can therefore be operated and serviced from any PC, Tablet or Smartphone.



One2Feed – 3 good reasons



Erik Andersen
Arden, Denmark

Erik Andersen have a herd of 330 cows divided in 6 groups: Recent calving, first calving, high yielding, low yielding, dry off and dry cows, further two group of heifers.

“Our housing system is suitable for dividing the herd into groups and with One2Feed it is obvious to take the feeding advantages by dividing the cows in groups”. Says Erik Andersen.

One2Feed has more than sufficient capacity and desired flexibility which ensures careful and uniform mixing.

According to Erik Andersen the 3 most important advantages with One2Feed system are:

- The vertical mixer, offering homogeneous fodder quality
- Good capacity and flexibility
- Reliable, solid state and simple construction



Jonas Kysinger
Gotland, Sweden

Jonas Kysinger have a herd of 235 cows with own breeding and we have many years of experience with automatic feeding systems.

“One2Feed has fully lived up to our expectations. We have a lot of flexibility, and we only use approx. 20 minutes on feeding per. day”. Says Jonas Kysinger.

“The management system is uncomplicated and takes place from a PC. Further, I can also control the entire system from my mobile phone, just as any alarms also is forwarded via the Internet”. Says Jonas Kysinger.

According to Jonas Kysinger the 3 most important advantages with One2Feed system are:

- Simple and reliable structure with 400 V power rails
- High flexibility, since it can mix all types of feed
- Easy to service, being built from standard components



Osean Link Farm
Obihiro, Hokkaido, Japan

Ocean Link Farm is one of Japans largest and most advanced dairy farms.

“With a large herd, financially it is essential to manage and have 100% control of the feeding routines and cost. We only use 30 – 40 minutes on feeding per. Day”. Says the three owners.

The feed ration can quickly and accurately be adjusted. It is easy to adjust the quantities for each group, to assure optimal feed quantity and content at any given time.

According to Osean Link Farm the 3 most important advantages with One2Feed system are:

- The large capacity and simple structure of the hoppers
- Vertical mixer in stainless steel with feed pusher
- Simple and flexible management software with on-line support

Less labor and more flexibility



Less labor and more flexibility

Traditional feeding is time consuming but is the most important and demanding job on a dairy farm. Optimal feeding requires precision and regularity. With One2Feed the job becomes a lot easier.

Precise feeding and better bottom line

Feed is the largest expense on a cattle farm and it is therefore essential for good financial results that feed is under 100% control, with a homogenous mix and exact distribution at every feeding.

One2Feed is based on experience

Combined with decades of experience with equipment operating on dairy farms and a commitment only to use proven technologies in One2Feed allows One2Feed to offer a durable efficient and high capacity feeding solution to dairy farmers at a global level.



For additional information: www.one2feed.dk

One2Feed
Lysemosen 8
DK 8600 Silkeborg
+45 87 57 27 77
www.one2feed.dk
mail@one2feed.dk



ONE2FEED